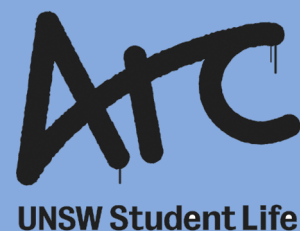


Proposal for a UNSW Bicycle Workshop

Principal authors: Eytan Rocheta
President, UNSW Bike Club, 2011
e.rocheta@unsw.edu.au
0415 935 713

Christopher Moore
President, UNSW Bike Club, 2009-2010
christopher.moore@unsw.edu.au
0422 521 598



UNSW Kensington Campus has excellent bike access with purpose built bike paths from all directions. UNSW recognises that cycling is fundamental to an integrated transport plan with cycling parking facilities integrated into the planning and design of new buildings. However a major barrier stopping students cycling to UNSW is the cost associated with maintaining a bicycle and lack of mechanical knowledge to be able to repair it themselves. This has been confirmed by recent market research conducted by UNSW marketing students, who found that the high cost of repairs was a primary barrier for students who owned a bike, preventing them from cycling to UNSW.

The UNSW Bike Club is well placed to assist UNSW in its goal of facilitating the uptake of cycling. The UNSW Bike Club provides around 500 bicycle services per year. When parts are considered, this has a value of over \$40,000 per annum.

Bike Club operates weekly bike maintenance workshops which attract around 25 students and staff per week, a Bike Loan scheme with a fleet of 17 bikes, and actively provides the student biking population with advice and maintenance at no cost to them or the University. However, Bike Club currently has inadequate and inaccessible workshop and storage space.

A student bike workshop

A repair workshop and storage space will allow the Club to continue to increase the number of cycle commuters to UNSW. The demand on campus for these services is high and growing with the increasing number of regular cyclists to UNSW.

A workshop space would be used to:

- Teach bicycle maintenance to students and help students repair their own bicycles;
- Create a centralised 'bike hub' with access to bike pumps and other tools and services;
- Provide resources and advice regarding cycle routes and bicycle safety, and sell safety products such as helmets, lights, reflector vests and brake pads;
- Recycle bikes that have been abandoned on campus for student use;
- Store bikes used in the Club's growing Bike Loan Scheme (17 bikes) and tools and spare parts used for maintaining bikes.

The space would be self-sustaining with ongoing funding through Arc and fundraising activities. The bicycle workshop would be open on a rostered volunteer basis in the same successful manner as the UNSW Food Coop. Bike Club volunteers will assist and monitor users of the workshop to repair their bicycles, and to ensure compliance with strict OH&S standards (to be maintained with OH&S training).

Minimum requirements

- Ability to modify internal areas (e.g. put hooks in walls)
- 10m (l) x 5m (w) x 3m (h)
- Ground level
- Electricity / Water / Sewerage
- Secure access
- Weatherproof

The UNSW Bike Club provides around 500 bicycle services per year. When parts are considered, this has a value of over \$40,000 per annum.

Cost estimates

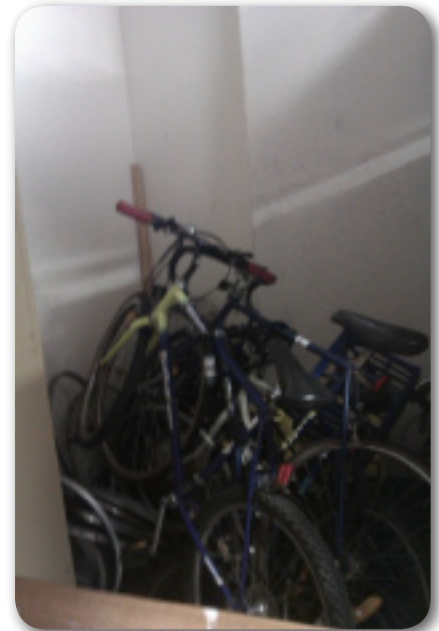
	<i>Spaces that could be used as-is</i>	<i>Spaces that need a shed</i>	<i>Spaces that need a shed and a concrete slab</i>
<i>Proposed spaces for student bike workshop</i>	Option #1 Storage room adjacent to chancellery carpark roller-doors	Option #2 Carpark between Mathews Building and multistory carpark Option #3 AGSM carpark Option #5 Carpark between Rupert Myers and Physics Building	Option #4 Grassy area between Roundhouse and Anzac Pde, adjacent to squarehouse
<i>Estimate of costs</i>	Workshop fit-out \$10,000 External bike pump \$3000	Shed (with roller door) \$20,000 Electricity/lighting \$3,000 Workshop fit-out \$10,000 External bike pump \$3000	Concrete slab \$30,000 Shed (with roller door) \$20,000 Electricity/lighting \$3,000 Workshop fit-out \$10,000 External bike pump \$3,000
<i>Total estimate</i>	\$13,000	\$36,000	\$66,000

Current problems

A workshop space is desperately needed to store tools, bikes, and bike parts. Without such a space, it is not known whether the activities of the Bike Club will continue.

A new agreement between the Club and UNSW Facilities Management diverts damaged bikes abandoned on campus to the Club for recycling purposes. This has resulted in a steady throughput of bikes to be reused by other students, but due to a lack of adequate storage space these bikes—in addition to those used in the Bike Loan Scheme—impede on the Stationary Reuse Centre (SRC).

There are also serious OH&S issues associated with the current space – bicycles, heavy tools and workstands must be carried up and down stairs to and from the workshop and storage areas. There is also a lack of security, as bicycles and parts are publically accessible when the SRC is open.



Right: The current Bike Club storage area, at the rear of the Stationery Reuse Centre.

A bicycle workshop on campus would bring UNSW in line with other major universities, most of which have either a bike workshop or shop.



Above: Option #1



Above: Option #2



Above: Option #3



Above: Option #4



Above: Public bike pump



Above: Well-designed workshop space

This would be a major sustainable transport initiative, allowing UNSW to facilitate the cycling boom that is currently occurring.